

NL-F150K2

LED Studio Soft Light

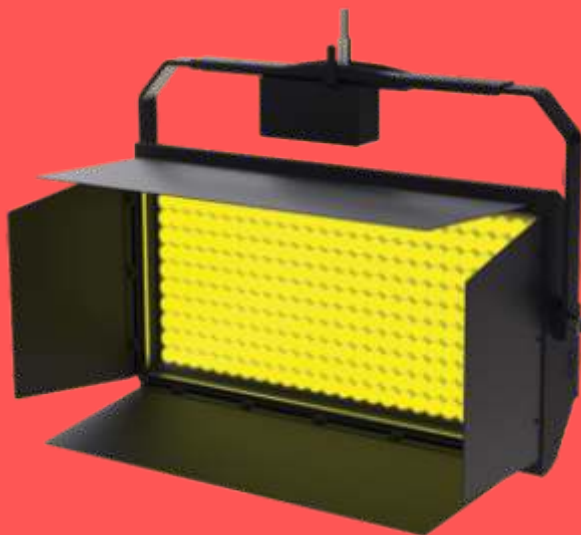
NORDLYS Soft LED Lights are available in several types with different characteristics; One of them is NL-F150 which is Smaller in size and output power in comparison With NL-F250 ofcourse as qualied as it; and benefits most of the same facilities.

The color temperature of NL-F150 is adjustable from 3200k to 5600k thanks to our Bi-Color LED design with out any sacrices on light output during changing The color or dimming; therefore we guarantee, over all colors and levels LED will Operate at the same brightness.

Like all of NORDLYS Soft LED lights but unlike competitive devices, NL-F150 has Been equipped with two Motors for PAN (horizontal) movement and TILT (vertical movement) enable the customer to change the position of installed LED light easily.

There are three ways of controlling the light(brightness level & CCT) and the Position(PAN & TILT movement) of this LED Projector:

1. Manually with the buttons of the device itself.
2. With cable(Standard Light consoles For Light with DMX protocol and Standard Joystick For Position)
3. Wirelessly with our transmitter device (called TANYA) which has been designed for all of NORDLYS devices.



Main Specification

- High resolution and smooth dimming With flicker-free light
- Controlling the position of device by built-in motors
- Wireless control of light and position With our local transmitter device called TANYA
- Due to the consumer's need, the Device is totally customizable to t your needs
- Device application: TV Studios, Black boxes, Theater scenes and all the locations with requirement of high quality light sources and precise color temperatures

Techniacal Features



Wireless
Controlled



Programmable
Customize



Upgradeable
Creative Minds



Guarantee
Protection LED



Broadcast
Professional



Dimmable
Controlled



Environment
Friendly

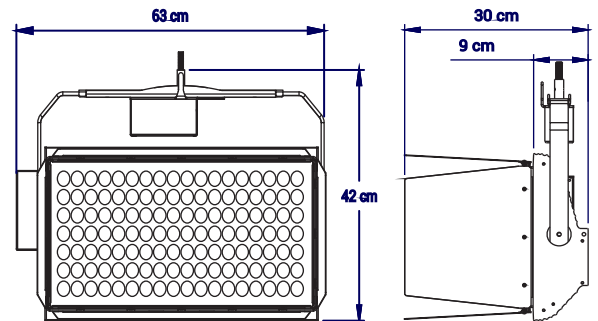


Ip68
For Cob LED

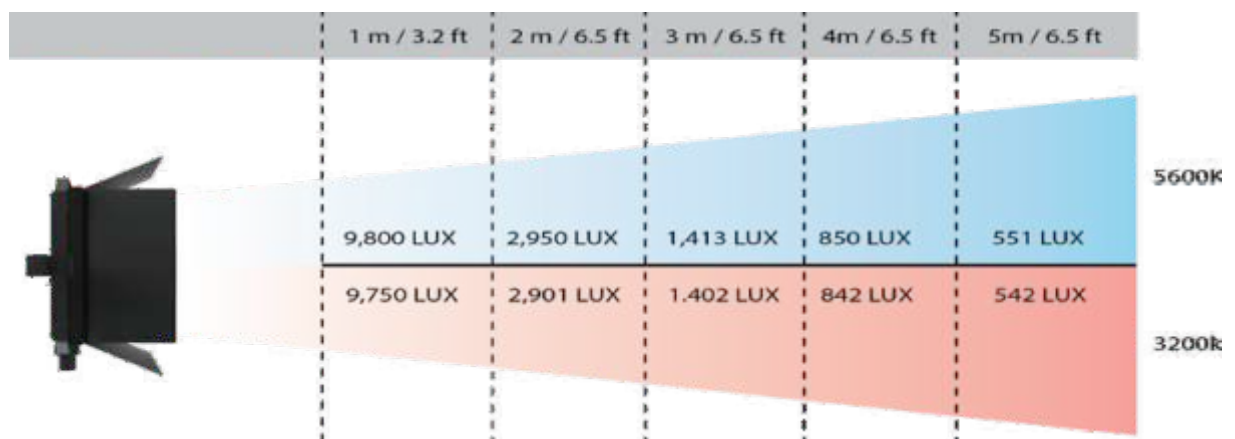
- Input Voltage: 110-240 Vac , 50/60Hz
- Total Power Consumption: 150 Watt
- Color Rendering Index: (CRI, Ra ≥97), TLCI ≥ 98
- Estimated LED Lifetime: 50,000 H
- Working environment Temperature: -20°C ~ 60°C
- Maximum humidity of working environment : %85
- Energy eciency : greater than 90% (high)
- DMX input/output Port type: XLR female/male connector
- Memorry type: internal eeprom(saving last parameters:address,level,cct,etc)
- Optical consideration:
 1. Four leaf barndoors
 2. Substitutable diusion panel (light,middle,heavy)
 3. Possibility of selecting LED lens angle (60,90,120)

Mechanical Features

- Dimension: 630 x 420 x 300 mm
- Weight: 11.3 Kg
- Fanless and nooiseless
- Housing Material: Cast Aluminum
- Housing/Body color: Customizable
- Motors: PAN & TILT
- Mounting: Customizable (with clamp, pantograph,stand,etc)



Photometric Data





Nordlys, Naturally Noble

At Nordlys, we are driven by innovation, continuously pushing the boundaries of what's possible in broadcast technology. We envision a future where media professionals have access to the best equipment, enabling them to tell their stories with clarity, creativity, and confidence.