

NL-F250K2

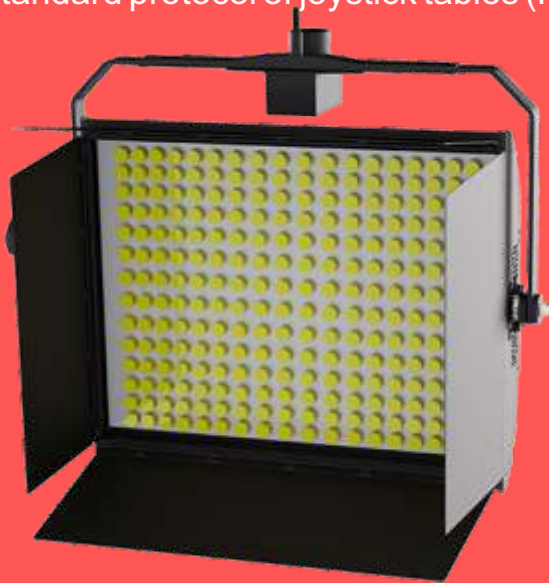
LED Studio Soft Light

“NL-F250K2” is one of the most luminous Soft LED Projectors Of NORDLYS corporation with high efficiency; which you can control its Light and position Manually by display and buttons of the Device itself, with Cable Through Light Consoles (for brightness level and color temperature of light) and joystick Table (For Position) and also wirelessly with our transmitter Device (called TANYA) Made by NORDLYS team that enables controlling every parameters of NORDLYS Devices, wirelessly with out any need of direct access to device itself!

Talking about motor, like every other NORDLYS devices and unlike Competitive light Devices, NL-F250K2 is equipped with two motors for PAN (right/left) and TILT (up/down) movement which is possible to be controlled with 3 methods manually (By menu of device), with cable(through Joystick table) and wirelessly(through TANYA Device made by NORDLYS team.)

Its better to mention, the color temperature of NL-F250K2 is adjustable from 3200K To 5600K thanks to our bi-color LED design and we did our best electrical design to Make no sacrifices on light output during changing the color or dimming; therefore We guarantee, over all colors and levels LED will operate at the same brightness.

For the record, NL-F250K2 supports standard protocol of light consoles(DMX) And standard protocol of joystick tables (Pelco-D).



Main Specification

- High resolution and smooth dimming With flicker-free light
- Controlling the position of device by built-in motors
- Wireless control of light and position With our local transmitter device called TANYA
- Due to the consumer's need, the Device is totally customizable to t your needs
- Device application: TV Studios, Black boxes, Theater scenes and all the locations with requirement of high quality light sources and precise color temperatures

Techniacal Features



Wireless
Controlled



Programmable
Customize



Upgradeable
Creative Minds



Guarantee
Protection LED



Broadcast
Professional



Dimmable
Controlled



Environment
Friendly

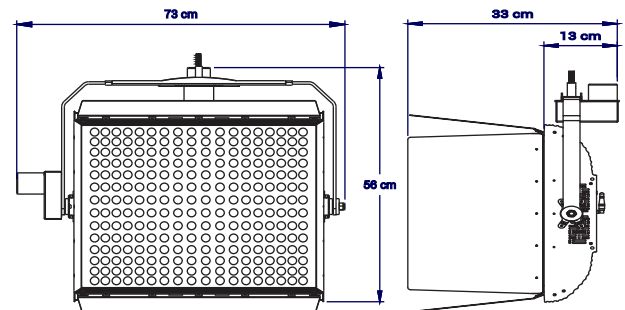


Ip68
For Cob LED

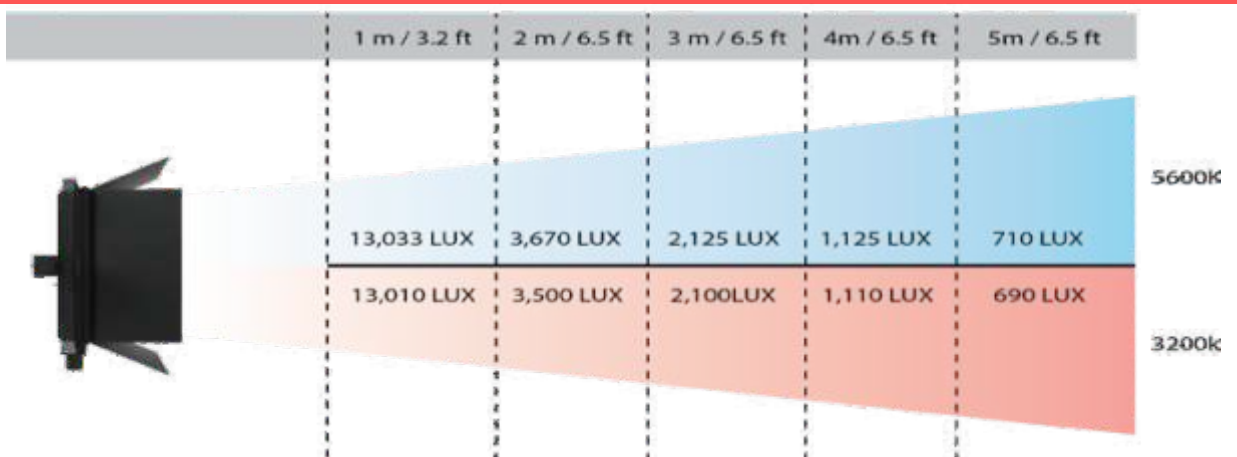
- Input Voltage: 110-240 Vac , 50/60Hz
- Total Power Consumption: 250 Watt
- Color Rendering Index: (CRI, Ra \geq 97), TLCI \geq 98
- Estimated LED Lifetime: 50,000 H
- Working environment Temperature: -20°C ~ 60°C
- Maximum humidity of working environment : %85
- Energy eciency : greater than 90% (high)
- DMX input/output Port type: XLR female/male connector
- Memorry type: internal eeprom(saving last parameters:address,level,cct,etc)
- Optical consideration:
 1. Four leaf barndoors
 2. Substitutable diusion panel (light,middle,heavy)
 3. Possibility of selecting LED lens angle (60,90,120)

Mechanical Features

- Dimension: 730 x 560 x 330 mm
- Weight: 16.5 Kg
- Fanless and nooiseless
- Housing Material: Cast Aluminum
- Housing/Body color: Customizable
- Motors: PAN & TILT
- Mounting: Customizable (with clamp, pantograph,stand,etc)



Photometric Data





Nordlys, Naturally Noble

At Nordlys, we are driven by innovation, continuously pushing the boundaries of what's possible in broadcast technology. We envision a future where media professionals have access to the best equipment, enabling them to tell their stories with clarity, creativity, and confidence.