



OPERATION MANUAL



NL-SB1500A

Professional Active Subwoofer

www.nordlyslight.com

UK Sales Office address:

128 City Road, London, United Kingdom, EC1V 2NX.

+44 20 3908 80 10

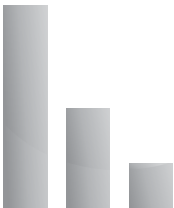
sales@nordlyslight.com

Factory address:

Lydehøjvej 6, 4720 Præstø, Denmark

+45 28 60 25 80

info@nordlyslight.com



www.nordlyslight.com

Thank you for purchasing our product. Before using the speaker, please read this instruction manual carefully to ensure correct use. After reading the manual, store it in a safe place for future reference.

SUBWOOFER SPECIFICATION:

- System type: 18" Active subwoofer
- RMS power: 2000W
- LF driver: 18"woofer, 4" VC
- Amplifier: CLASS-D
- Freq. Range(-10dB): 32Hz-150Hz
- MAX SPL: 133dB/144dB(peak)
- Input connector: XLR
- Output connector: XLR
- Phase: Phase select switch
- Functions: DSP Processor, RS485 Network
- Enclosure: 20mm Plywood

CAUTIONS:

1. All operating instructions should be read before using this equipment.
2. To reduce the risk of electric shock, do not open the unit. There are NO REPLACEABLE PARTS INSIDE.
Please refer servicing to a qualified service technician.
3. Do not expose this unit to direct sunlight or to a heat source such as a radiator or stove.
4. This unit should be cleaned only with a damp cloth. Avoid solvents or other cleaning detergents.
5. When moving this equipment, it should be placed in its original carton and packaging. This will reduce the risk of damage during transit.
6. DO NOT EXPOSE THIS UNIT TO RAIN OR MOISTURE.
7. DO NOT USE ANY SPRAY CLEANER OR LUBRICANT ON ANY CONTROLS OR SWITCHES.
8. Make sure ALL of your equipment is completely OFF and lower ALL VOLUME, LEVEL & GAIN controls before connecting the speaker.
9. ONLY LINE LEVEL SIGNALS CAN BE SENT TO YOUR SPEAKER.

Disregarding any of the above will void your warranty!!!!

SUBWOOFER/AMPLIFIER FUNCTION:

1. RS485 network data communication input: Use network data lines with RJ45 connector to connect PC (Prepare a RJ45/USB converters to convert RS485 if necessary). Relevant operations can be performed through the software (Pro Speaker Management System) download from PC, the ACTIVE indicator will flash when the data is connected.

Download link: <https://we.tl/t-DjWD2A0F7b>

2. RS 485 network data communication output: Used to connect multiple devices simultaneously.

The LINK lights on when the network is successfully connected to the next device.

3. Multi-function audio signal input: Used to connect mixer and other audio signal sources.

4. Audio signal output: Use XLR connector balanced or unbalanced.

5. Volume control.

6. Low pass control: Adjust the low pass frequency between 90Hz and 150Hz.

7. Power indicator.

8. Limiter indicator: The red light illuminated when the audio signal reaches the maximum output power of the speaker, the input signal will be restricted. Adjust the level control and HF control appropriately if the red light illuminated continuously.

9. Signal indicator: The LED lights up when signal input.

10. Phase switch: The subwoofer has phase switch NORMAL and INVERTED. Pressing this switch reverses the phase of subwoofer output with respect to signal input.

11. Power supply inlet.

12. AC link: Connect the power cord output plug to this connector and the other plug to next device.

13. Fuse T10AL, 250V.

14. Power switch: Turns the system On and Off. Ensure the system volume control at minimum when switching on.

Make sure ALL of your equipment is completely OFF and lower ALL VOLUME, LEVEL & GAIN controls before connecting the speaker.

CONNECTIONS:

1. For this unit you can connect a mixer or other audio signal sources directly into your speaker. Use XLR connector to connect to the signal input(3) .

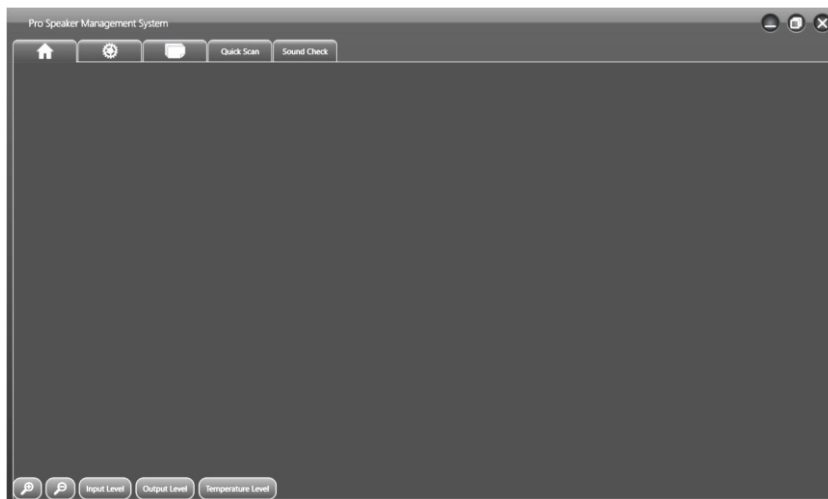
2. You can LINK additional speakers using the signal link(4) connection. The amplifier on your speaker will only power this speaker. If you LINK to additional speakers those speakers must be self amplified.



*Prepare a RJ45/USB
converters if necessary

Pro Speaker Management System OPERATION

Home page

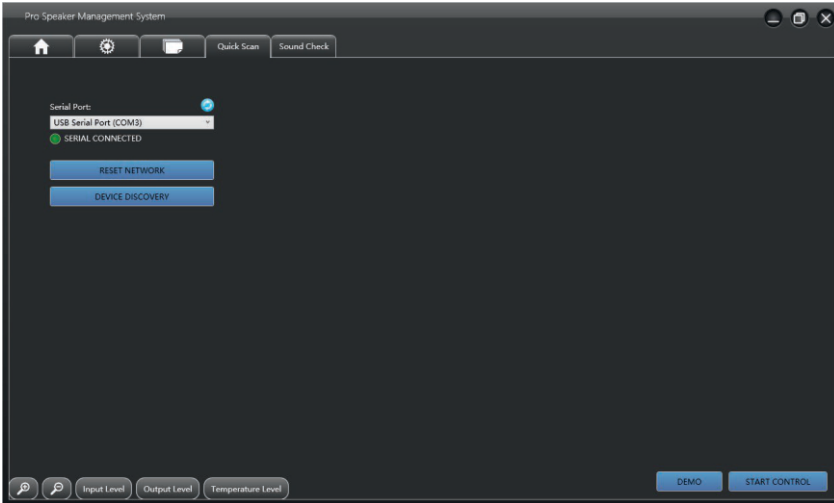


The Home screen is the first screen which appears after you launch the Pro Speaker Management System software. Access to main menu / System information/ Load&Save/Quick Scan/Sound Check

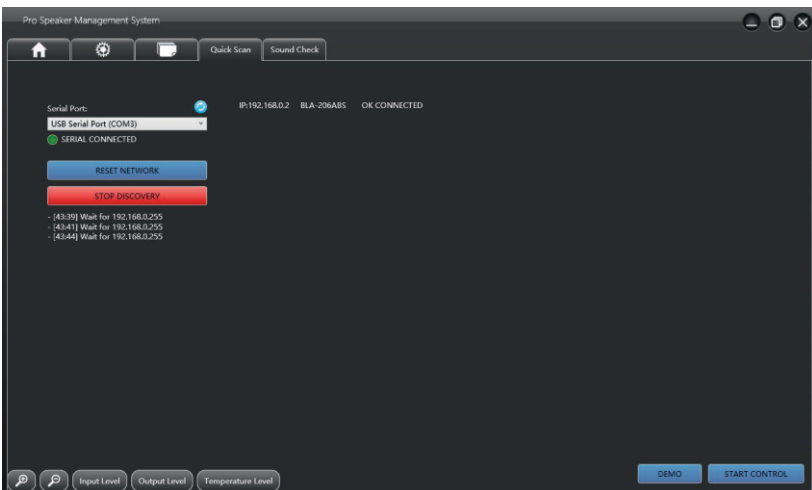
Also 5 quick access functions :

- Zoom + : To maximize blocks on main menu page
- Zoom - : To minimize blocks on main menu page
- Input Level : Press this button for a quick view of input level in all speaker blocks
- Output Level : Press this button for a quick view of output level in all speaker blocks
- Temperature level: Press this button for a quick view of amplifier temperature level in all speaker blocks.

Quick Scan page

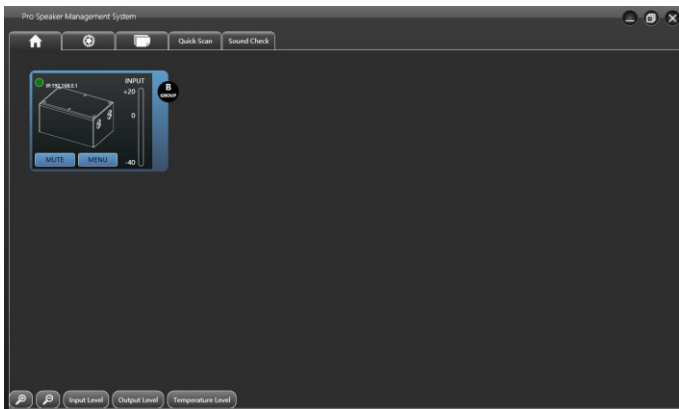


- Connect your speaker(s) to the RS485 computer interface.
- Check if the right PORT is selected for your RS485 interface.
- Press **RESET Network**
- Press **DEVICE DISCOVERY** button, to find the speaker(s) connected to the RS485 network.
 - o Once the discovery finished, the message "Stop Discovery" will appear.
 - o The connected speakers will appear.
- Press **START CONTROL** to access speakers features and controls.



NOTE: In this Quick Scan page , you have the DEMO function which allows you to have a look on general features and functions of the "Pro Speaker Management System" without connecting any speaker.

Home page with SPEAKER BOX



Once your speaker detected on the RS485 network, you can START CONTROL.

The "speaker box" of your NL-SB1500A is now accessible.

- The green light on top left of the box confirms your NL-SB1500A system is well connected on network.

- 3 main functions are available:

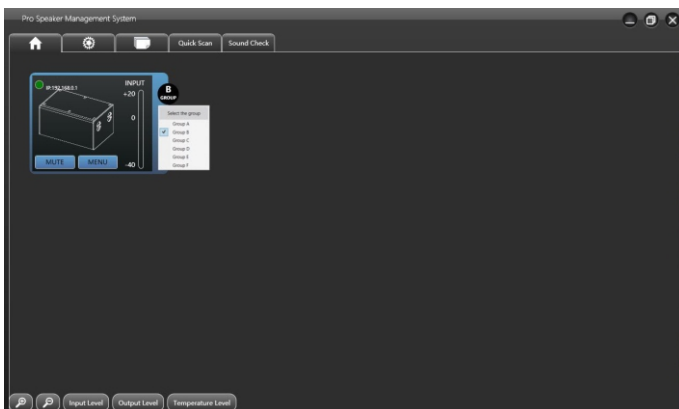
- **(Group selection)**
- **(MUTE)**
- **(MENU)**

Group selection:

Very convenient if you want to adjust several speakers at same time.

Example: If you have 2x NL-SB1500A systems connected.. one on right side and one on left side, you can adjust crossover parameters, EQ parameters, levels ... on both speakers at same time.

Just select the same group for the 2 systems.



NOTE: Up to 6 groups of speakers can be created.

MUTE:

Press this button to mute the complete system.

NOTE:

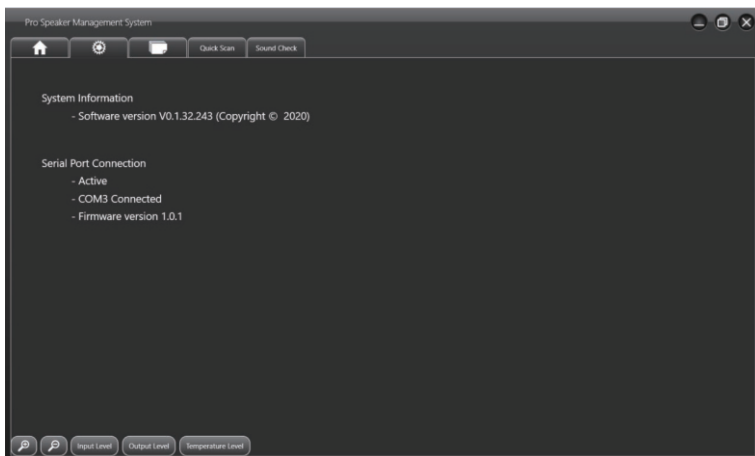
You can press any "quick access button" (Input LEVEL, Output LEVEL or Temperature LEVEL) at any time. The speaker box will display the LEVEL selected.

MENU:

Press this button to access speaker parameters. (pls see next page)

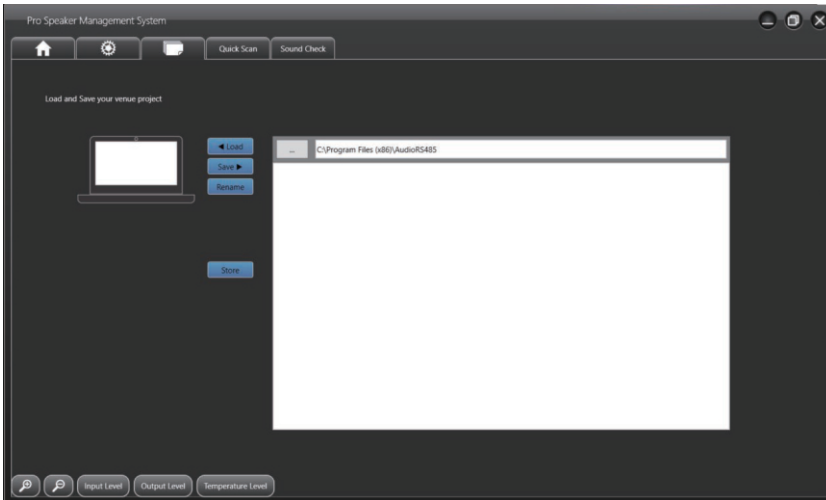


System information page



Displays your connection status and your software version.

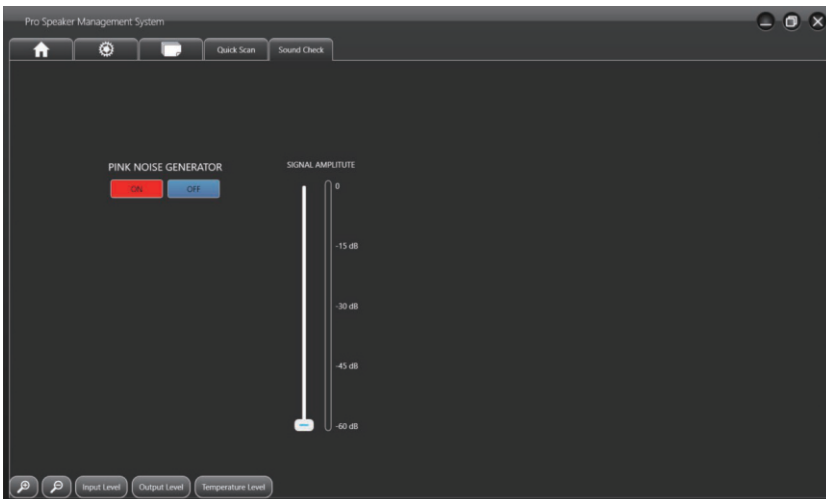
Load & Save page



- Save your project, Load a project, Rename a project

Project files will be saved in your computer systemfile , in folder "AudioRS485" automatically created when you have installed the **Pro Speaker Management System** in your computer.

Sound Check Page

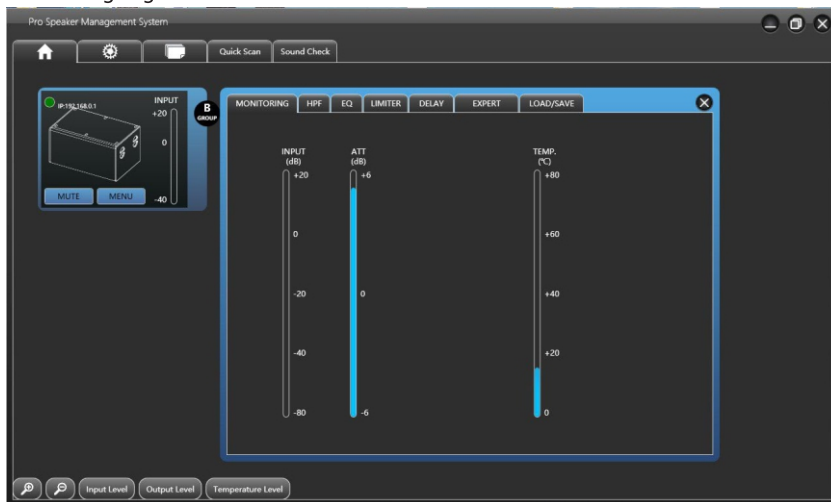


Very useful tool for your sound checking.

Turn ON PINK NOISE GENERATOR and adjust your speaker SPL curve with external spectrum analyzer.

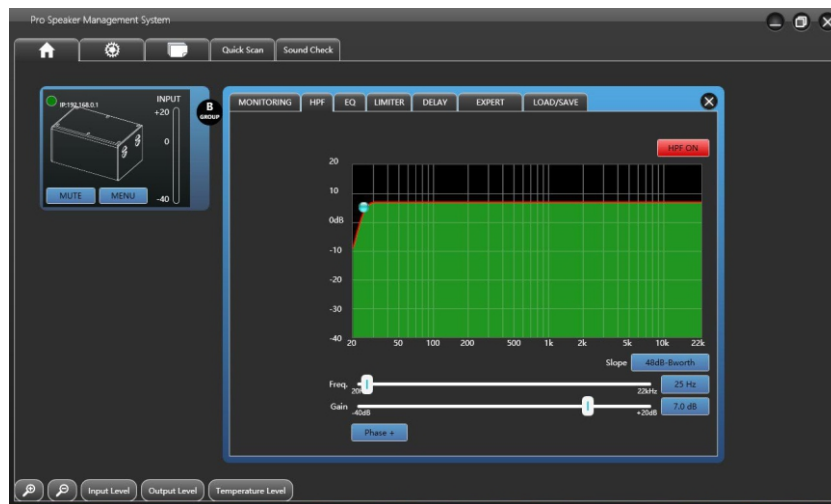
SPEAKER BOX (MENU)

Monitoring Page



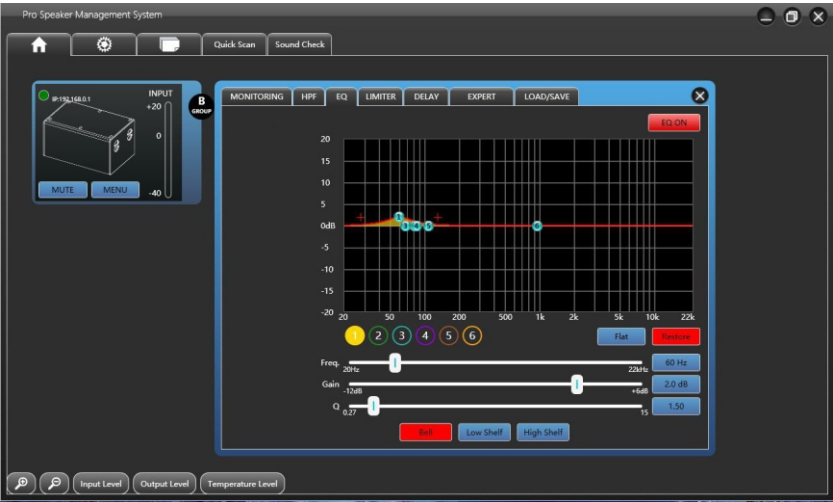
Real time monitoring of your system. From this page you can separately MUTE the top speaker and the Sub bottom speaker.

HPF Filter Page



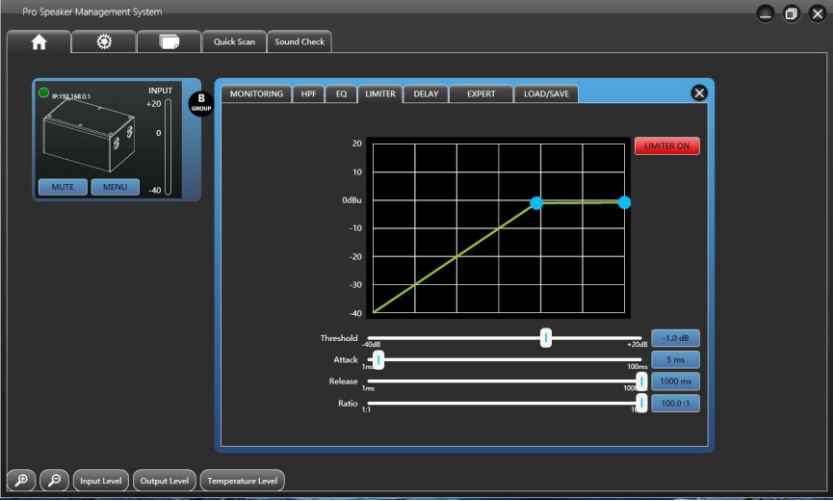
Adjust here the low-cut frequency to protect your system or to adjust low cut frequency if you use an extra SUBWOOFER.

EQ Page



This EQ page is for general EQ of your system. This is a parametric EQ with 6 EQ points. You can adjust Frequency, Gain and Slope for each separate EQ point. You can select Bell , Low Shelf or High Shelf curve.

Limiter Page



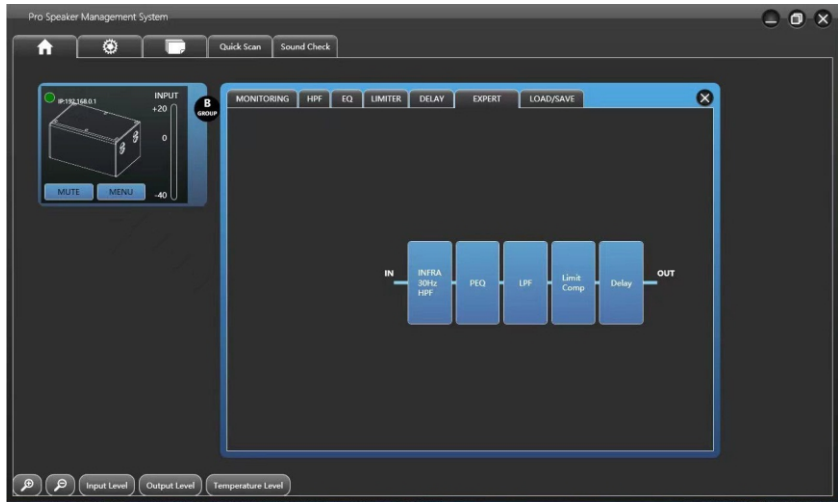
Protect your system. As a professional limiter section, you can adjust : Threshold, Attack, Release and Ration adjustments.

Delay Page



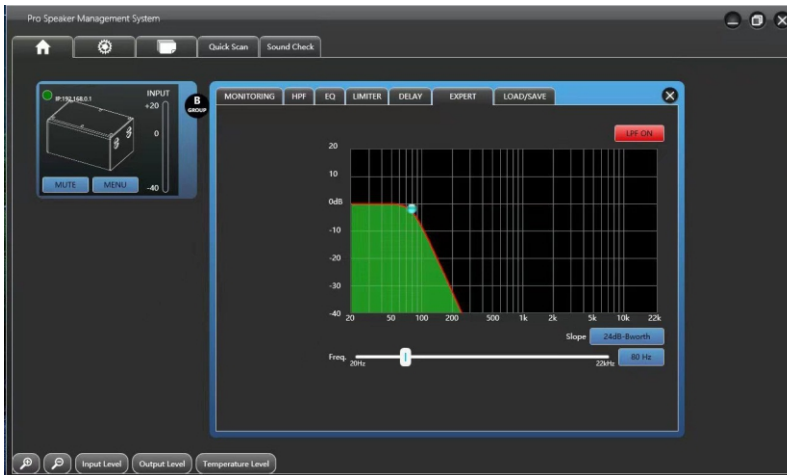
You may need to add delay on your speaker system depending on its position in your installation. You don't need external speaker management system. You can do it directly with the NL-SB1500A software. To help you on delay adjustment , the delay is displayed in M(meter), ms(Millisecond time) and FT(feet)

Expert page



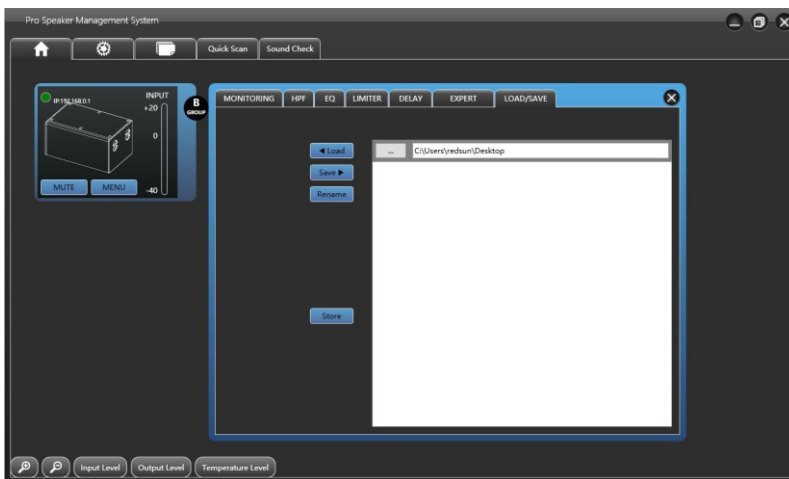
This EXPERT menu gives you access to the deeper parameters of the speaker system. You will be able to change the LPF parameter of the SUBWOOFER.

LPF Page



On this page, you can set the LPF frequency of subwoofer, adjust the range of 90-150hz to choose the slope and type of LPF filter, 12-48dB Butterworth, 12-48dB Linkwitz-Riley or 12-48dB Bessle.

Load & Save page



- Save your project, Load a project, Rename a project

Project files will be saved in your computer systemfile , in folder "AudioRS485" automatically created when you have installed the Pro Speaker Management System in your computer.

Factory address: Jagtvej 153, 203, 2200 Copenhagen, Denmark

UK Sales Office address:128 City Road, London, United Kingdom, EC1V 2NX

www.nordlyslight.com